

12 Pest Monitors

PM2000

Trapper[®]
PEST MONITOR



1 00 30835 40008 6

370PM-3

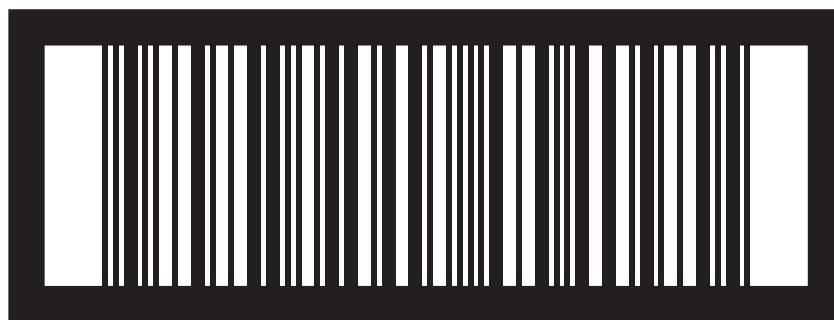
SPECIMEN LABEL

12 Pest Monitors

PM2000

Trapper[®]

PEST MONITOR



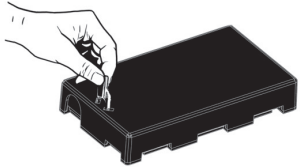
1 00 30835 40008 6

 **Bell**
LABORATORIES, INC.
www.bellabs.com
Madison, WI 53704 U.S.A.
EPA EST. NO. 12455-WI-1

How to use

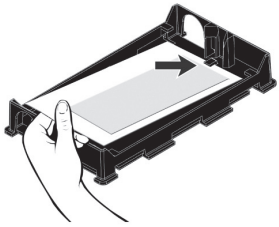
A sample of TRAPPER MC Glue Trap is included.

Trapper® Pest Monitor



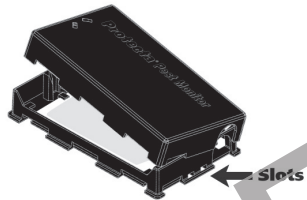
To open

Unlock top from base with TRAPPER 2-prong key.



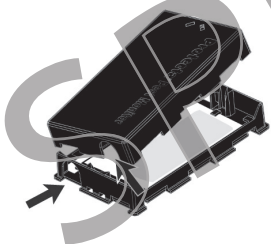
To monitor for mice and insects

Place TRAPPER MC Glue Trap under tab on base. Position glue trap so that glue-free edge is along mouse runway.



To close

Reattach lid by inserting tabs from top into slots on the base. Snap shut.



To use as insect monitor only

Rotate top 180 degrees so that mouse entry holes are blocked.

Place TRAPPER Pest Monitor wherever insects and mice travel: indoors under pallets and shelves, inside cupboards and along walls; or outdoors along the perimeter of buildings.

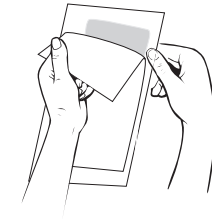
Additional TRAPPER MC Glue Traps are available from your distributor.



DIRECTIONS

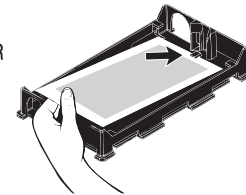
TRAPPER® Pest Monitor

- 1 Peel off release paper.



- 2 Place glue trap under tab on base of TRAPPER Pest Monitor.

Position so that glue-free edge is along mouse runway.



Easy Disposal • Convenient • Sanitary

EPA EST. NOS. 12455-WI-1^K
12455-WI-2^P, 12455-WI-3^W
Superscript is first letter
of the lot number.



3699 Kinsman Blvd.
Madison, WI 53704 U.S.A.
www.belllabs.com